

Bass Clef

# Al Dente

56 FMI<sup>7</sup>

A musical staff in bass clef with a 4/4 time signature. The staff is divided into four measures, all of which are currently empty.

60 A<sup>b</sup>MI<sup>7</sup>

A musical staff in bass clef, divided into four empty measures.

64 FMI<sup>7</sup>

A musical staff in bass clef, divided into four empty measures.

68 B<sup>7</sup>sus

A musical staff in bass clef, divided into four empty measures.

72 B<sup>b</sup>MA7(#11)      A<sup>b</sup>MA7(#11)      G<sup>b</sup>MA7(#11)      B<sup>13</sup>(#11)

A musical staff in bass clef, divided into four empty measures.

76 E<sup>7</sup>sus      G<sup>7</sup>sus      C<sup>11</sup>      B<sup>b</sup>11

A musical staff in bass clef, divided into four empty measures.

80 B<sup>b</sup>/A<sup>b</sup>      A<sup>b</sup>/G<sup>b</sup>      E<sup>b</sup>2/G

A musical staff in bass clef, divided into four empty measures.

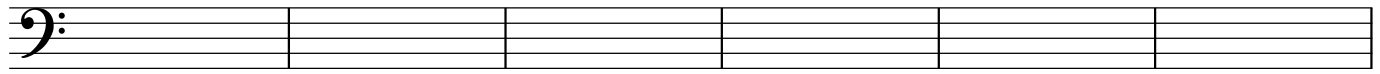
84 D<sup>b</sup>/C      FMI      Honk!

A musical staff in bass clef, divided into five empty measures.

2

90  $A^b M7$

$F M7$



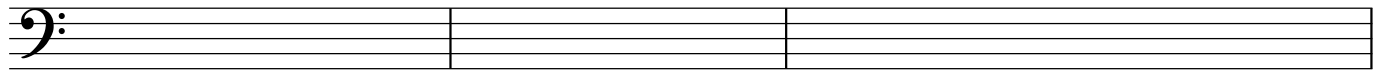
96  $F M7$

$G M7$

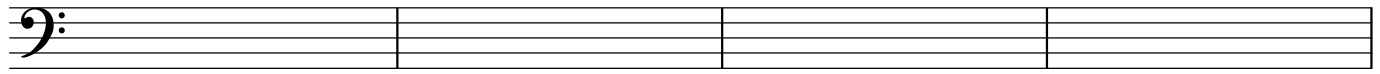
$D^b 13sus$

$E^b 13sus$

$B^b 13$



99  $B 13sus$

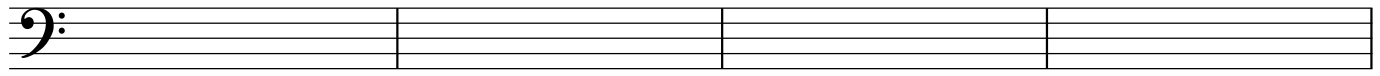


103  $B^b MA7(\#11)$

$A^b MA7(\#11)$

$G^b MA7(\#11)$

$B 13(\#11)$



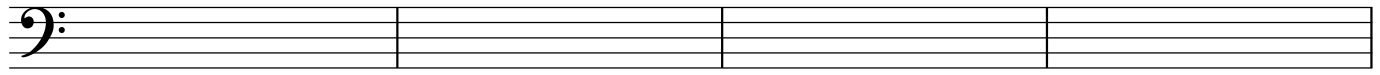
107  $E^9sus$

$G^9sus$

$A^9sus$

$C^{11}$

$B^b 11$



111  $B^b/A^b$   $A^b/G^b$

$E^b 2/G$

$D^b/C$

