

All The Things You Are

F_{MI}^7 $B^{\flat}_{MI}^7$ $E^{\flat 7}$ $A^{\flat MA}7$

5 $D^{\flat MA}7$ D_{MI}^7 G^7 $C_{MA}7$

9 C_{MI}^7 F_{MI}^7 $B^{\flat 7}$ $E^{\flat MA}7$

13 $A^{\flat MA}7$ $A_{MI}^7(b5)$ $D^7(b9)$ $G_{MA}7$

17 A_{MI}^7 D^7 $G_{MA}7$

21 $F^{\sharp}_{MI}^7(b5)$ $B^7(b9)$ $E_{MA}7$ $C^7(b13)$

25 F_{MI}^7 $B^{\flat}_{MI}^7$ $E^{\flat 7}$ $A^{\flat MA}7$

29 $D^{\flat MA}7$ $G^{\flat 7}$ C_{MI}^7 $B^{\circ 7}$

33 $B^{\flat}_{MI}^7$ $E^{\flat 7}$ $A^{\flat 6/9}$ $G_{MI}^7(b5)$ $C^7(b13)$

Bb Theory

All The Things You Are

Chord chart for "All The Things You Are" in Bb major, 4/4 time. The chart consists of nine staves of music, each with a treble clef and a key signature of two flats. The first staff starts with a repeat sign and a 4/4 time signature. Chords are placed above the staff lines, and measure numbers (5, 9, 13, 17, 21, 25, 29, 33) are placed to the left of the staves. The piece ends with a double bar line and repeat dots.

Staff 1: GMI⁷ CMI⁷ F⁷ B^bMA⁷

Staff 2: 5 E^bMA⁷ EMI⁷ A⁷ DMA⁷

Staff 3: 9 DMI⁷ GMI⁷ C⁷ FMA⁷

Staff 4: 13 B^bMA⁷ BMI⁷(b5) E7(b9) AMA⁷

Staff 5: 17 BMI⁷ E⁷ AMA⁷

Staff 6: 21 G[#]MI⁷(b5) C[#]7(b9) F[#]MA⁷ D7(b13)

Staff 7: 25 GMI⁷ CMI⁷ F⁷ B^bMA⁷

Staff 8: 29 E^bMA⁷ A^b7 DMI⁷ C[#]o7

Staff 9: 33 CMI⁷ F⁷ B^b6/9 AMI⁷(b5) D7(b13)

Eb Theory

All The Things You Are

1 FMI7 B^bMI⁷ E^b7 A^bMA⁷

5 D^bMA⁷ DMI⁷ G⁷ CMA⁷

9 CMI⁷ FMI⁷ B^b7 E^bMA⁷

13 A^bMA⁷ AMI⁷(b5) D⁷(b9) GMA⁷

17 AMI⁷ D⁷ GMA⁷

21 F[#]MI⁷(b5) B⁷(b9) EMA⁷ C⁷(b13)

25 FMI⁷ B^bMI⁷ E^b7 A^bMA⁷

29 D^bMA⁷ G^b7 CMI⁷ B⁰7

33 B^bMI⁷ E^b7 A^b6/9 GMI⁷(b5) C⁷(b13)

Bass Clef Theory

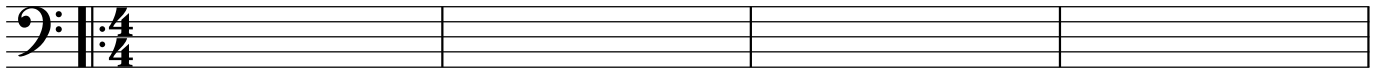
All The Things You Are

F_MI⁷

B^b_MI⁷

E^b7

A^bM_A7

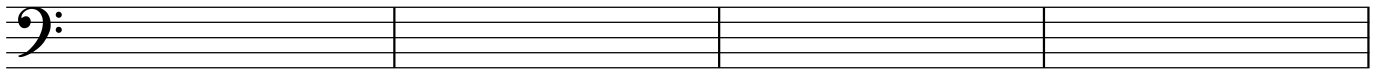


5 D^bM_A7

D_MI⁷

G⁷

C_MA⁷

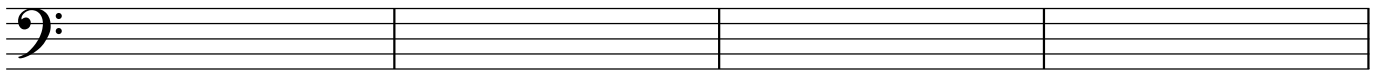


9 C_MI⁷

F_MI⁷

B^b7

E^bM_A7

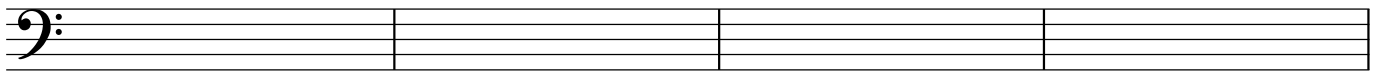


13 A^bM_A7

A_MI^{7(b5)}

D^{7(b9)}

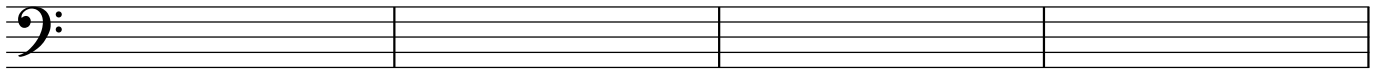
G_MA⁷



17 A_MI⁷

D⁷

G_MA⁷

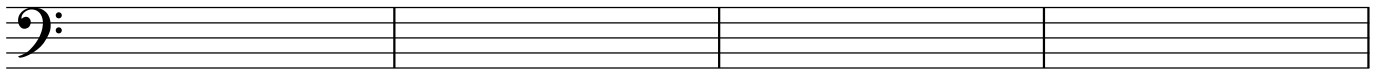


21 F[#]_MI^{7(b5)}

B^{7(b9)}

E_MA⁷

C^{7(b13)}

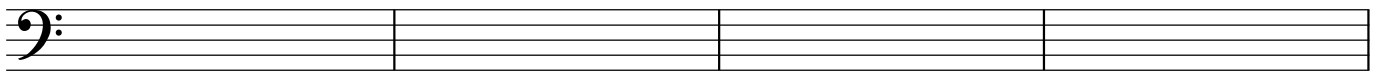


25 F_MI⁷

B^b_MI⁷

E^b7

A^bM_A7

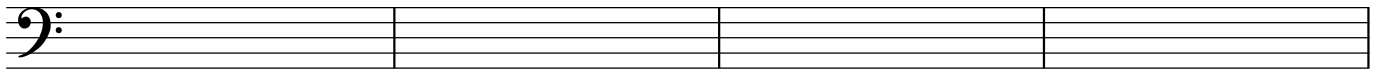


29 D^bM_A7

G^b7

C_MI⁷

B^o7



33 B^b_MI⁷

E^b7

A^b6/9

G_MI^{7(b5)}

C^{7(b13)}

