

Concert

Peri's Scope

Tomaro

67 DMI⁹/G G+⁷(b⁹) EMI⁷/G A+⁷(b⁹)/G DMI⁹/G G+⁷(b⁹) EMI⁷/G A+⁷(b⁹)/G

71 DMI⁹/G G+⁷(b⁹) CMA⁹ E+⁹

75 FMA⁹ G¹³ EMI⁷ A+⁷(b⁹) DMI⁹ G¹³ C⁹sus C+⁷(b⁹)

79 FMA⁹ B+⁹ B^b13 A+⁹

83 DMI⁹/G G+⁷(b⁹) EMI⁷ A+⁷(b⁹) DMI⁹ D#o7 EMI⁷ A+⁷(b⁹)

87 DMI⁹ G¹³ G+⁷(#9) CMA⁹ EMI⁹ A+⁷(b⁹)

Bb

Peri's Scope

Tomaro

67 EMI⁹/A A+^{7(b9)} F[#]MI⁷/A B+^{7(b9)}/A EMI⁹/A A+^{7(b9)} F[#]MI⁷/A B+^{7(b9)}/A

71 EMI⁹/A A+^{7(b9)} DMA⁹ F[#]+⁹

75 GMA⁹ A¹³ F[#]MI⁷ B+^{7(b9)} EMI⁹ A¹³ D⁹sus D+^{7(b9)}

79 GMA⁹ C[#]+⁹ C¹³ B+⁹

83 EMI⁹/A A+^{7(b9)} F[#]MI⁷ B+^{7(b9)} EMI⁹ E[#]o⁷ F[#]MI⁷ B+^{7(b9)}

87 EMI⁹ A¹³ A+^{7(#9)} DMA⁹ F[#]MI⁹ B+^{7(b9)}

Eb

Peri's Scope

Tomaro

67 B_MI⁹/E E^{+7(b9)} C[#]_MI⁷/E F^{#+7(b9)}/E B_MI⁹/E E^{+7(b9)} C[#]_MI⁷/E F^{#+7(b9)}/E

71 B_MI⁹/E E^{+7(b9)} A^{MA9} C^{#+9}

75 D^{MA9} E¹³ C[#]_MI⁷ F^{#+7(b9)} B_MI⁹ E¹³ A^{9sus} A^{+7(b9)}

79 D^{MA9} G^{#+9} G¹³ F^{#+9}

83 B_MI⁹/E E^{+7(b9)} C[#]_MI⁷ F^{#+7(b9)} B_MI⁹ B^{#o7} C[#]_MI⁷ F^{#+7(b9)}

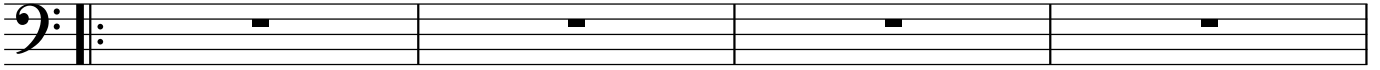
87 B_MI⁹ E¹³ E^{+7(#9)} A^{MA9} C[#]_MI⁹ F^{#+7(b9)}

Bass Clef

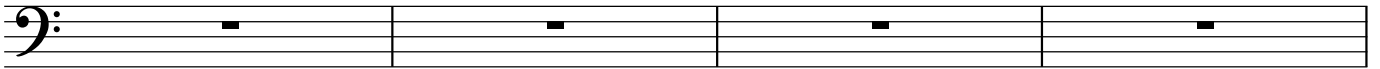
Peri's Scope

Tomaro

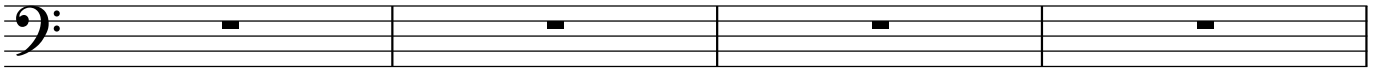
67 DMI⁹/G G+7(b⁹) EMI⁷/G A+7(b⁹)/G DMI⁹/G G+7(b⁹) EMI⁷/G A+7(b⁹)/G



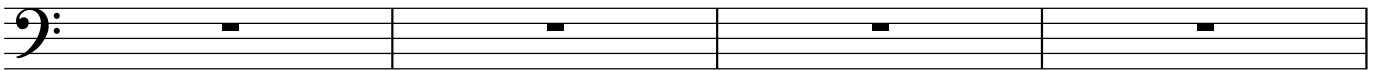
71 DMI⁹/G G+7(b⁹) CMA⁹ E+⁹



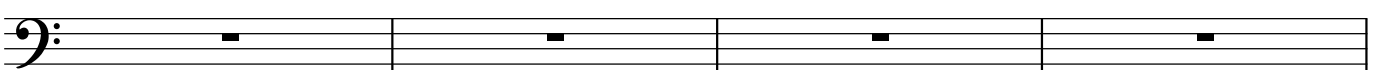
75 FMA⁹ G¹³ EMI⁷ A+7(b⁹) DMI⁹ G¹³ C⁹sus C+7(b⁹)



79 FMA⁹ B+⁹ B^b13 A+⁹



83 DMI⁹/G G+7(b⁹) EMI⁷ A+7(b⁹) DMI⁹ D#^o7 EMI⁷ A+7(b⁹)



87 DMI⁹ G¹³ G+7(#⁹) CMA⁹ EMI⁹ A+7(b⁹)

