

Concert

Spin Cycle

57 C7(#9) / / D^b7(#9) C7(#9) / / D^b7(#9)

61 C7(#9) / / D^b7(#9) C7(#9) / / D^b7(#9)

65 C7(#9) / / D^b7(#9) C7(#9) / / D^b7(#9)

69 C7(#9) / / D^b7(#9) C7(#9) / / D^b7(#9)

73 D7(#9) / / E^b7(#9) D7(#9) / / E^b7(#9)

77 D7(#9) / / E^b7(#9) D7(#9) / / E^b7(#9)

81 D7(#9) / / E^b7(#9) D7(#9) / / E^b7(#9)

85 D7(#9) / / E^b7(#9) D7(#9) / / D^b7(#9)

Bb

Spin Cycle

57 D7(#9) / / Eb7(#9) D7(#9) / / Eb7(#9)



61 D7(#9) / / Eb7(#9) D7(#9) / / Eb7(#9)



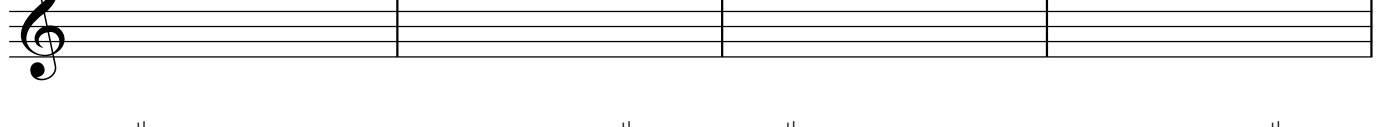
65 D7(#9) / / Eb7(#9) D7(#9) / / Eb7(#9)



69 D7(#9) / / Eb7(#9) D7(#9) / / Eb7(#9)



73 E7(#9) / / F7(#9) E7(#9) / / F7(#9)



77 E7(#9) / / F7(#9) E7(#9) / / F7(#9)



81 E7(#9) / / F7(#9) E7(#9) / / F7(#9)



85 E7(#9) / / F7(#9) E7(#9) / / Eb7(#9)



Detailed description: This image shows a page of musical notation for a piece titled "Spin Cycle" in the key of B-flat major. The notation is organized into eight systems, each representing a four-measure phrase. Each system begins with a measure number (57, 61, 65, 69, 73, 77, 81, 85) and a chord symbol. The first measure of each system contains a treble clef, a repeat sign, and a double bar line. The subsequent three measures of each system are empty staves. Above the staves, the chord symbols are: D7(#9) / / Eb7(#9) D7(#9) / / Eb7(#9) for systems 57-68, and E7(#9) / / F7(#9) E7(#9) / / F7(#9) for systems 73-80. The final system (85) has the chord symbols E7(#9) / / F7(#9) E7(#9) / / Eb7(#9). The notation concludes with a double bar line and repeat dots.

Eb

Spin Cycle

57 A7(#9) / / Bb7(#9) A7(#9) / / Bb7(#9)

61 A7(#9) / / Bb7(#9) A7(#9) / / Bb7(#9)

65 A7(#9) / / Bb7(#9) A7(#9) / / Bb7(#9)

69 A7(#9) / / Bb7(#9) A7(#9) / / Bb7(#9)

73 B7(#9) / / C7(#9) B7(#9) / / C7(#9)

77 B7(#9) / / C7(#9) B7(#9) / / C7(#9)

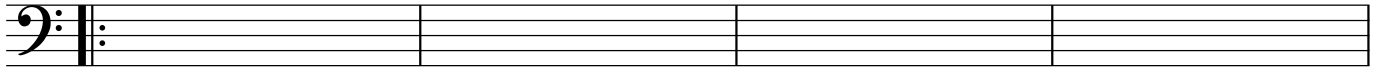
81 B7(#9) / / C7(#9) B7(#9) / / C7(#9)

85 B7(#9) / / C7(#9) B7(#9) / / Bb7(#9)

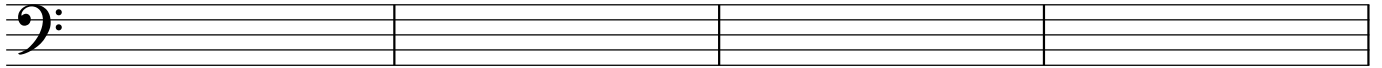
Bass Clef

Spin Cycle

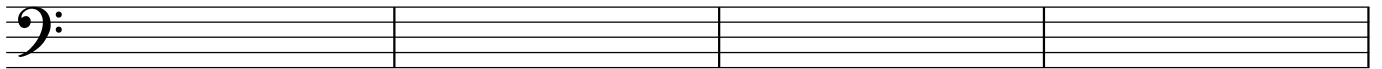
57 C7(#9) / / D^b7(#9) C7(#9) / / D^b7(#9)



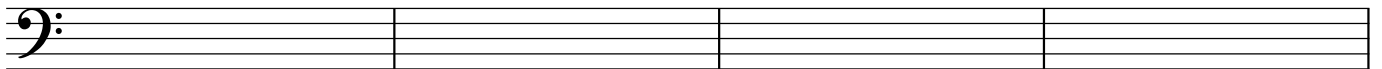
61 C7(#9) / / D^b7(#9) C7(#9) / / D^b7(#9)



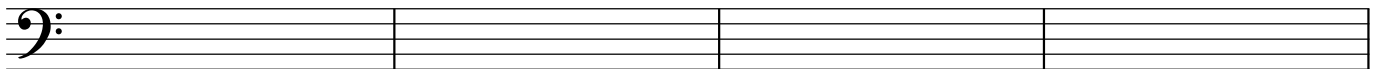
65 C7(#9) / / D^b7(#9) C7(#9) / / D^b7(#9)



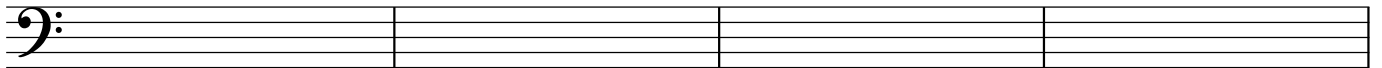
69 C7(#9) / / D^b7(#9) C7(#9) / / D^b7(#9)



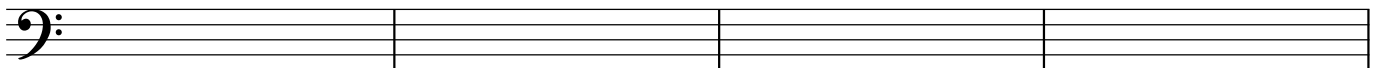
73 D7(#9) / / E^b7(#9) D7(#9) / / E^b7(#9)



77 D7(#9) / / E^b7(#9) D7(#9) / / E^b7(#9)



81 D7(#9) / / E^b7(#9) D7(#9) / / E^b7(#9)



85 D7(#9) / / E^b7(#9) D7(#9) / / D^b7(#9)

