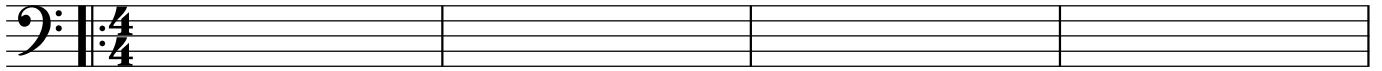


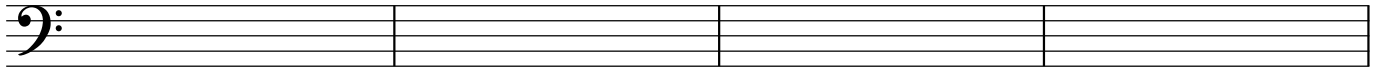
Bass Clef

Take Only For Pain

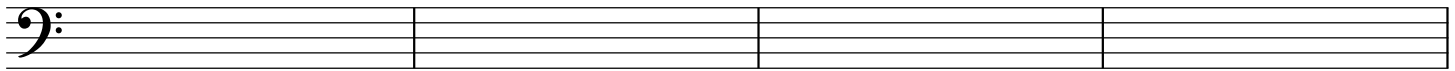
82 DMI¹¹ B+⁷(#9) E+⁷(#9) A+⁷(#9)



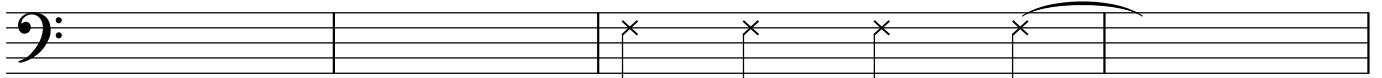
86 DMI¹¹ B+⁷(#9) E+⁷(#9) A+⁷(#9)



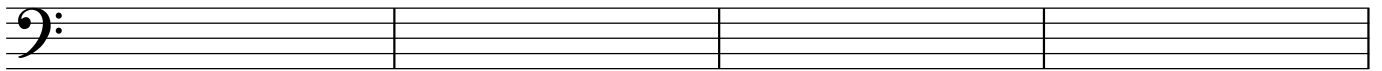
90 B^b/A^b G⁹sus D/F# FMI¹³



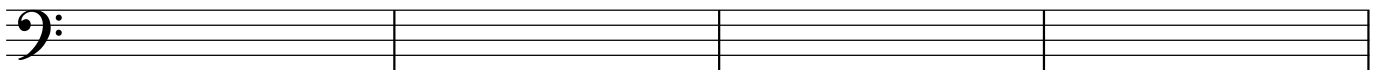
94 E+⁷(#9) A+⁷(#9) D⁷sus B_M/D^b C⁹sus



98 DMI¹¹ B+⁷(#9) E+⁷(#9) A+⁷(#9)



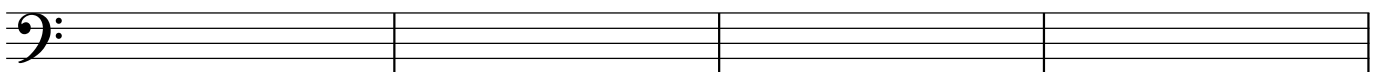
102 DMI¹¹ B+⁷(#9) E+⁷(#9) A+⁷(#9)



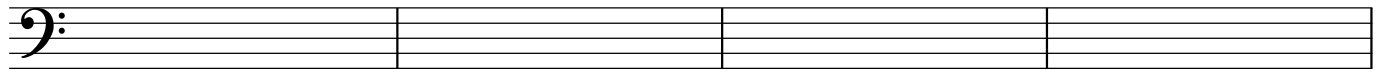
106 B^b/A^b G⁹sus D/F# FMI¹³



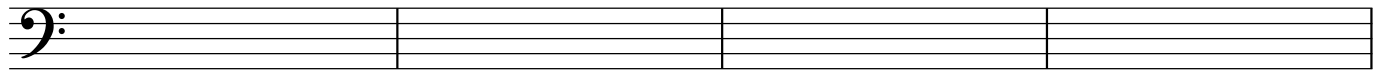
110 E+⁷(#9) A+⁷(#9) D⁷sus D⁷ALT



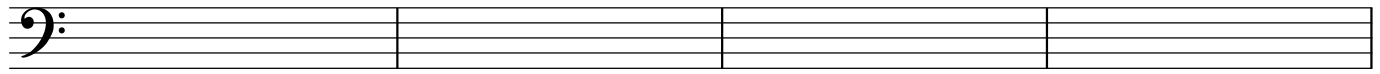
114 C⁹sus B¹³(#11)



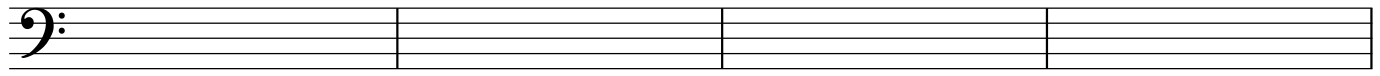
118 B^{b13}sus E⁷(#11) E^bM¹ D⁺7(#9)



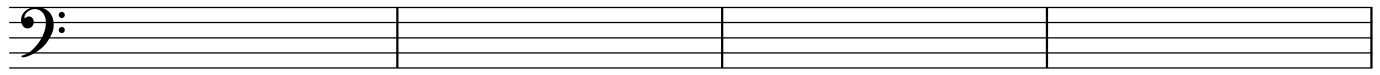
122 D^bMA⁹ C⁺7(#9)



126 BMA⁷ E^{MA}7 A^b/B^b B^b E^b/A A⁺7(#9)



130 D⁷sus D⁷ALT D⁷sus D⁷ALT



134 D⁷sus D⁷ALT D⁷sus / / C⁹sus

