

Concert Theory

# There Will Never Be Another You

Chord progression for "There Will Never Be Another You":

1  $E^bMA7$   $DMI7(b5)$   $G7(b9)$

5  $CMi7$   $B^bMi7$   $E^b7$

9  $A^bMA7$   $D^b7$   $E^bMA7$   $CMi7$

13  $F7$   $FMI7$   $B^b7$

17  $E^bMA7$   $DMI7(b5)$   $G7(b9)$

21  $CMi7$   $B^bMi7$   $E^b7$

25  $A^bMA7$   $D^b7$   $E^bMA7$   $AMi7(b5)$   $D7(b9)$

29  $E^bMA7$   $D7(b9)$   $D^b7$   $C7(b9)$   $FMI7$   $B^b7$   $E^b6/9$   $A^bMA7/B^b$

Bb Theory

# There Will Never Be Another You

1 FMA7 EMI<sup>7</sup>(b5) A<sup>7</sup>(b9)

5 DMI<sup>7</sup> CMI<sup>7</sup> F<sup>7</sup>

9 B<sup>b</sup>MA<sup>7</sup> E<sup>b</sup>7 FMA<sup>7</sup> DMI<sup>7</sup>

13 G<sup>7</sup> GMI<sup>7</sup> C<sup>7</sup>

17 FMA<sup>7</sup> EMI<sup>7</sup>(b5) A<sup>7</sup>(b9)

21 DMI<sup>7</sup> CMI<sup>7</sup> F<sup>7</sup>

25 B<sup>b</sup>MA<sup>7</sup> E<sup>b</sup>7 FMA<sup>7</sup> Bmi<sup>7</sup>(b5) E<sup>7</sup>(b9)

29 FMA<sup>7</sup> E<sup>7</sup>(b9) E<sup>b</sup>7 D<sup>7</sup>(b9) GMI<sup>7</sup> C<sup>7</sup> F<sup>6/9</sup> B<sup>b</sup>MA<sup>7</sup>/C

# There Will Never Be Another You

1 CMA7 Bm7(b5) E7(b9)

5 Am7 Gm7 C7

9 FMA7 Bb7 CMA7 Am7

13 D7 Dm7 G7

17 CMA7 Bm7(b5) E7(b9)

21 Am7 Gm7 C7

25 FMA7 Bb7 CMA7 F#m7(b5) B7(b9)

29 CMA7 B7(b9) Bb7 A7(b9) Dm7 G7 C% FMA7/G

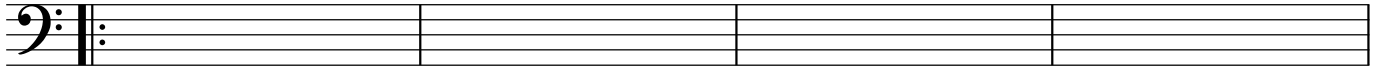
Bass Clef Theory

# There Will Never Be Another You

E<sup>b</sup>MA7

D<sub>MI</sub>7(b5)

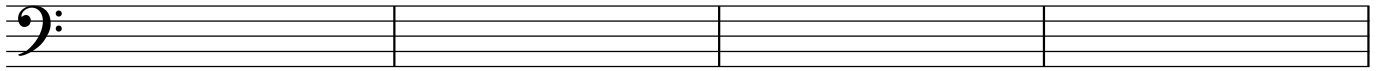
G7(b9)



5 C<sub>MI</sub>7

B<sup>b</sup><sub>MI</sub>7

E<sup>b</sup>7

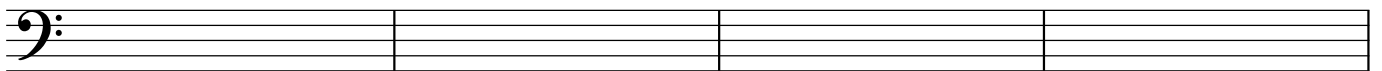


9 A<sup>b</sup>MA7

D<sup>b</sup>7

E<sup>b</sup>MA7

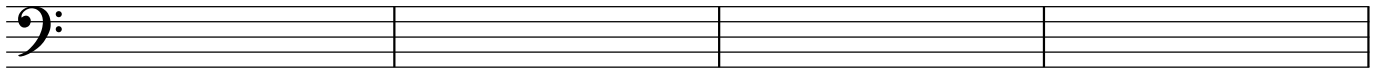
C<sub>MI</sub>7



13 F7

F<sub>MI</sub>7

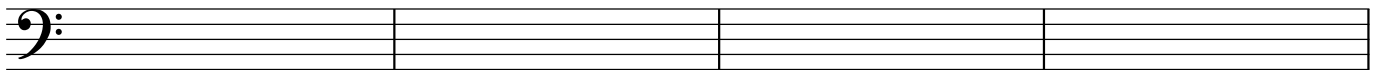
B<sup>b</sup>7



17 E<sup>b</sup>MA7

D<sub>MI</sub>7(b5)

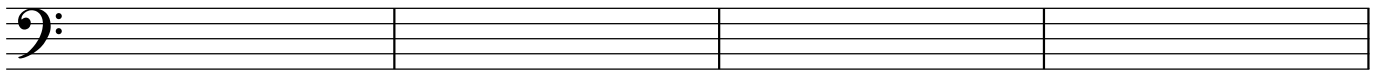
G7(b9)



21 C<sub>MI</sub>7

B<sup>b</sup><sub>MI</sub>7

E<sup>b</sup>7

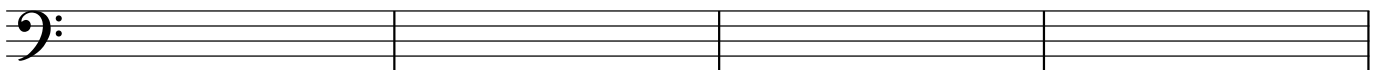


25 A<sup>b</sup>MA7

D<sup>b</sup>7

E<sup>b</sup>MA7

A<sub>MI</sub>7(b5) D7(b9)



29 E<sup>b</sup>MA7

D7(b9)

D<sup>b</sup>7

C7(b9)

F<sub>MI</sub>7

B<sup>b</sup>7

E<sup>b</sup>6/9

A<sup>b</sup>MA7/B<sup>b</sup>

